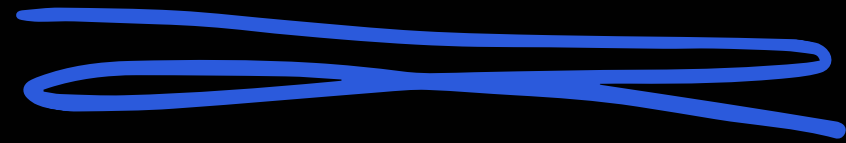




**FAST**



**IoT Platform**

“Your ticket to IoT and beyond”

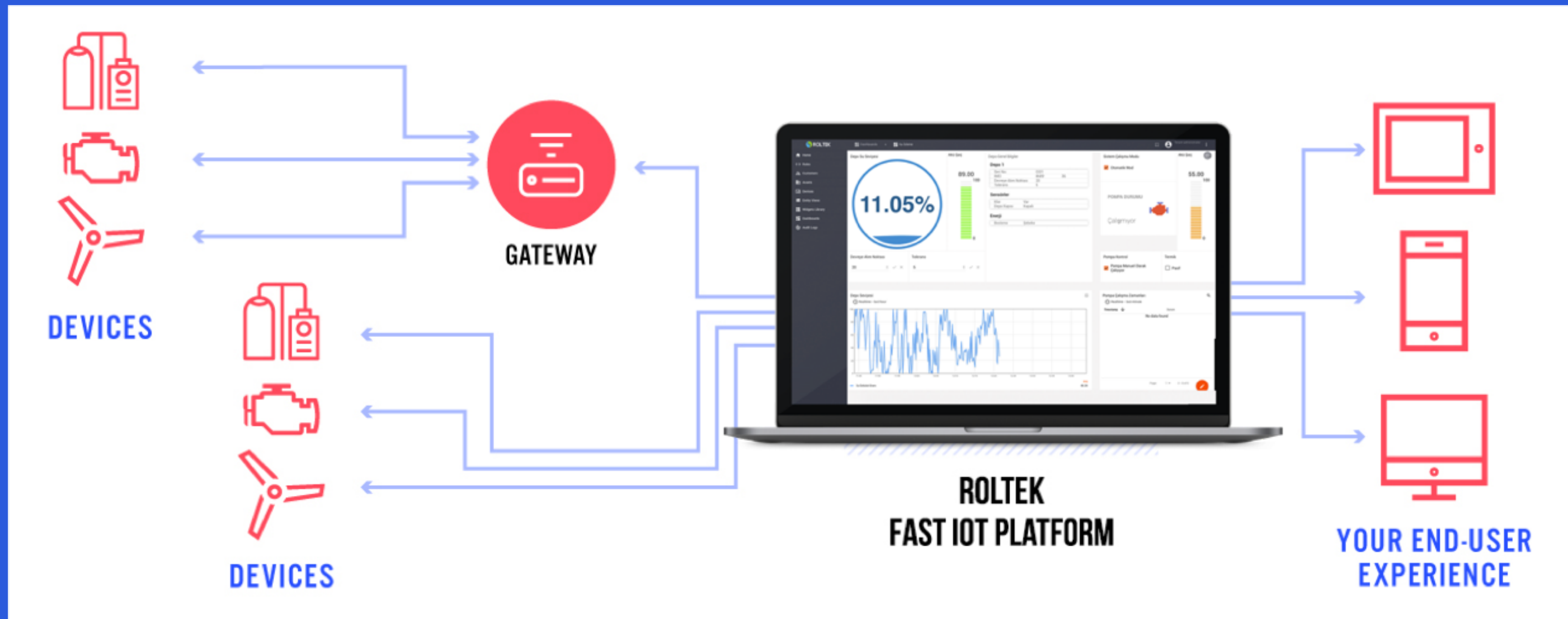
# What is the FAST IoT Platform?

Fast IoT Platform is a cloud-based or on-premise IoT platform that enables rapid development, management and scaling of IoT projects.



# How to work FAST IoT Platform?

Fast IoT Platform enables devices to be remotely controlled and monitored, directly or by connecting to the system via gateways, and allows you to process, visualize and report the obtained data.



# Device management, data collection, processing and visualization for your IoT solution

It enables device connectivity over industry standard IoT protocols - MQTT, CoAP, HTTP, Modbus, and OPC-UA, and supports both cloud and on-premises use. Fast IoT Platform is scalable and provides high performance. Backs up your data. So you will never lose your data.



CoAP



OPC UA

Created time ↓	Name	Device type
2021-03-09 15:39:26	Pompa 6	Pompa
2021-01-21 17:57:03	Pompa 5	Pompa
2021-01-21 17:56:44	Pompa 4	Pompa
2021-01-21 17:56:29	Pompa 3	Pompa
2021-01-21 17:53:40	Pompa 2	Pompa
2021-01-12 12:35:36		
2021-01-12 11:12:51		
2021-01-07 15:19:21		
2021-01-06 14:28:19		
2020-12-20 16:02:58		
2020-12-18 15:33:27		
2020-12-18 15:33:12		
2020-11-06 14:49:31		
2020-10-13 15:20:27	SN-009	default

## SN-001

## Device details

DETAILS ATTRIBUTES **LATEST TELEMETRY** ALARMS EVENTS RELATIONS AUDIT LOGS

## Latest telemetry

Last update time	Key ↑	Value
2020-07-09 11:47:28	humidity	58
2020-07-09 11:47:28	temperature	42

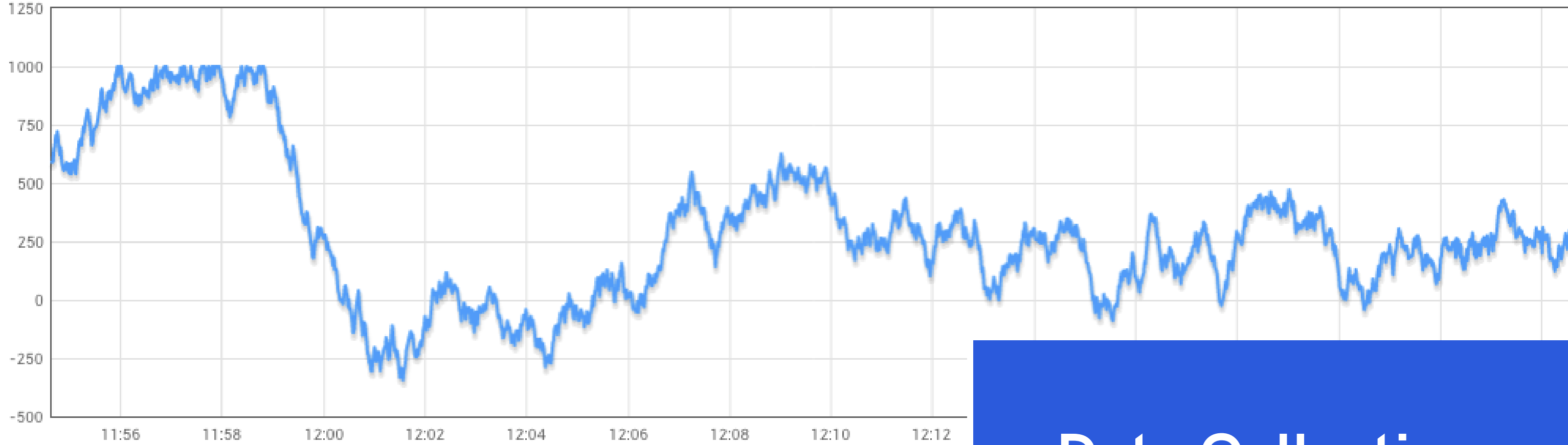
## Identify and manage devices and assets

Industrial, IoT protocols and APIs secure your IoT assets using define, monitor and control.

Define the relationships between your devices and assets, customers or other entities.

## Sıcaklık Sensörü Grafik

🕒 Realtime - last 30 minutes



56

100



# Data Collection and Visualization

Collect and store telemetry data in a scalable and fault-tolerant way. Visualize your data with built-in or custom indicator tools and flexible dashboards. Share dashboards with your customers.

## Sensör Değerleri

🕒 Realtime - last 15 minutes

Timestamp ↓

2021-03-15 12:24:37

2021-03-15 12:24:36

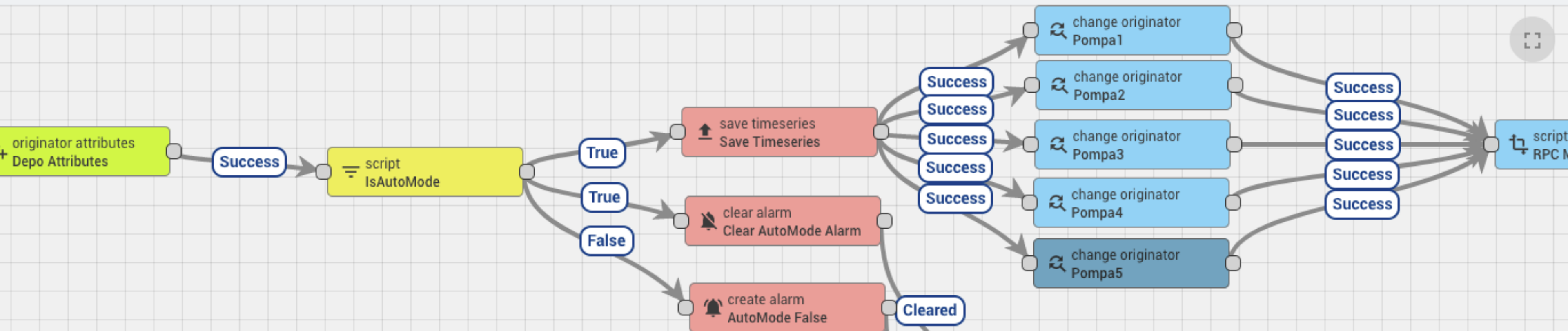
2021-03-15 12:24:35

2021-03-15 12:24:34

191.5

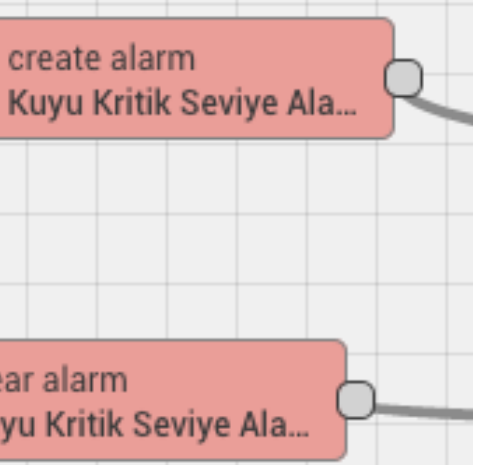
220.61





# Processes and Rules

Define detailed rule chains for data processing. Transform and normalize your device data. Create alarms for incoming telemetry events, device feature updates, device inactivity, and user actions.







Alarmlar



Realtime - last 30 days



<input type="checkbox"/>	Created time ↓	Originator ↑	Type	Severity	Status			
<input type="checkbox"/>	2021-03-04 01:24:57	Pompa 1	Bağlantı Hatası	<b>Critical</b>	Active Unacknowledged	...	✓	✗
<input type="checkbox"/>	2021-02-18 16:13:20	Pompa 1	Bağlantı Hatası	<b>Critical</b>	Active Unacknowledged	...	✓	✗

# Alarm Management

Alerts about your devices and assets  
Lets you create and manage. Set threshold  
values for data collected from devices,  
device disconnection or inactivity events.  
Define alarms.

Items per page: 10 1 - 2 of 2 < >



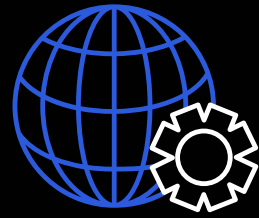
Çıkı

Kaç

Kapalı

Off

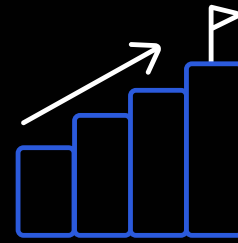




## Reliable

---

SSL for both MQTT and HTTP protocols  
Supports encryption. Device with authentication and device identity management provides a high level of security.



## Scalable

---

With its microservice architecture, it is suitable for horizontal expansion in direct proportion to the number of devices connected to the system and data traffic. Problems such as downtime, rebooting do not occur.



## Optional License

---

Fast IoT Platform has suitable license options for end users and customers. Choose the one that suits you from Cloud SaaS or On-premise (In-premise installation) license options.

# Data Collection and Sensor Tracking

The sensors to be monitored are connected to the system directly or via gateways with supported protocols. Sensor data is monitored in real time and retrospectively, and alarms are generated according to threshold values for the data obtained from the sensors.



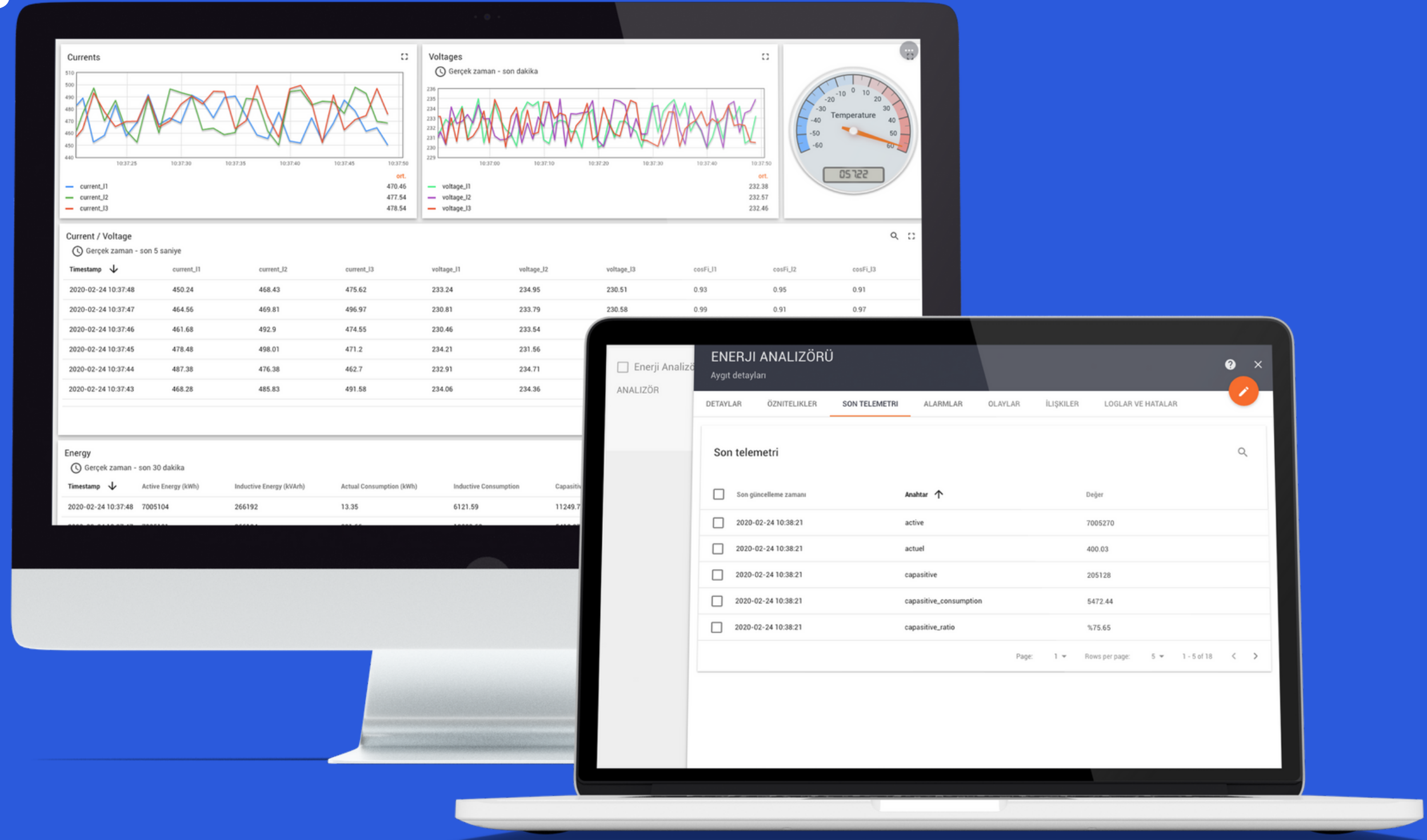
# Greenhouse and Meteorology Station Tracking

All sensors used in greenhouses and meteorology stations are defined to the system. According to the sensor data, different systems (irrigation system, ventilation, etc.) can be automatically activated or deactivated, and smart agriculture applications can be developed quickly.



# Energy Monitoring and Management

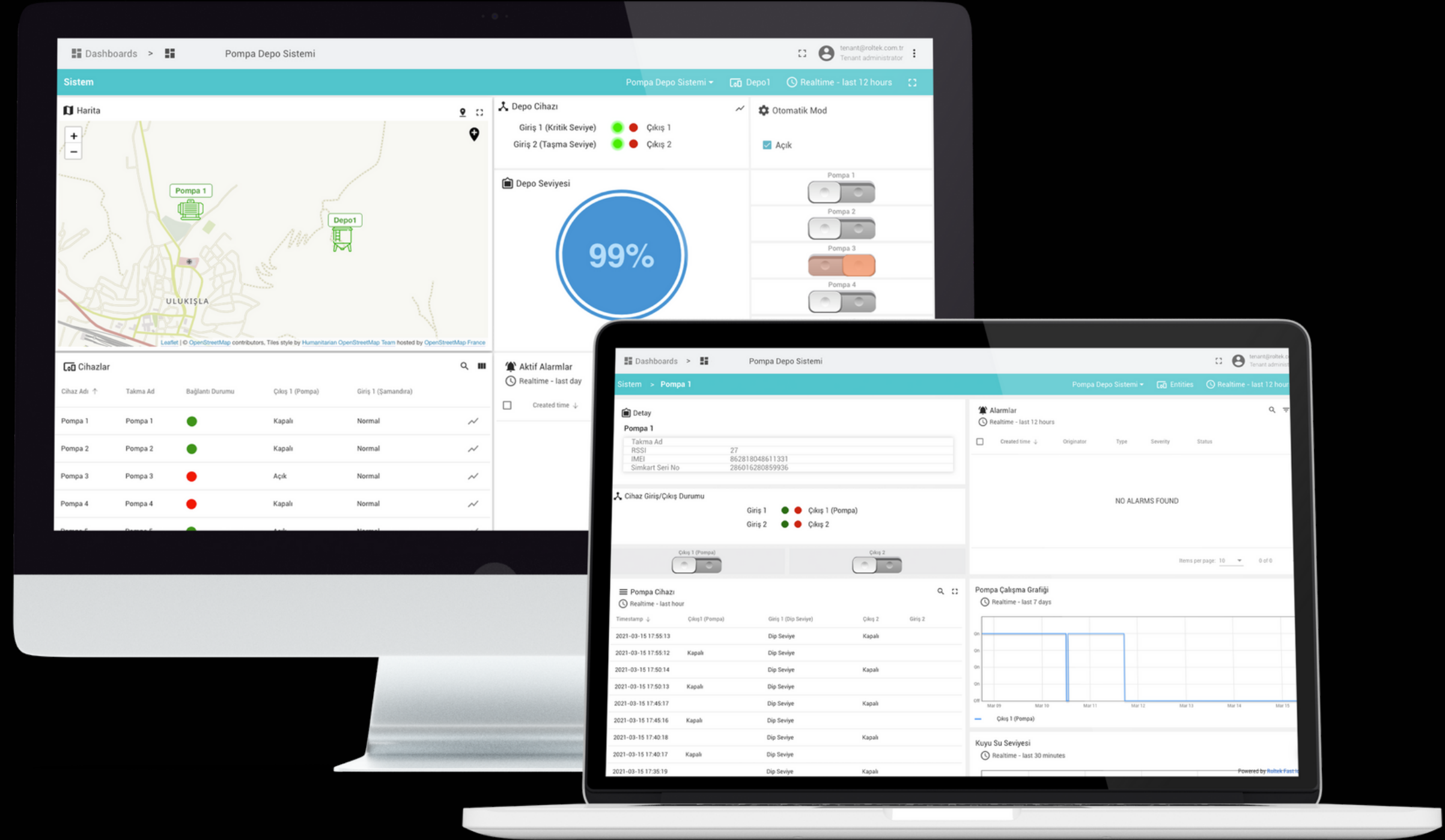
All energy meters and consumptions of production facilities or buildings are monitored via energy analyzers and all energy consumption is reported. Thanks to the instant and retrospective reports, unnecessary energy consumption is detected.





# Water Monitoring and Management

In clean water or wastewater control and monitoring, automatic activation and deactivation of pumps is provided according to the water level. Instant occupancy rates of the warehouses are monitored in real time. In pump failures, alarms are generated at the critical level and overflow levels of the tank.



# References



# Contact us

---



## Phone

00 90 850 305 1220

## Email

[info@roltek.com.tr](mailto:info@roltek.com.tr)